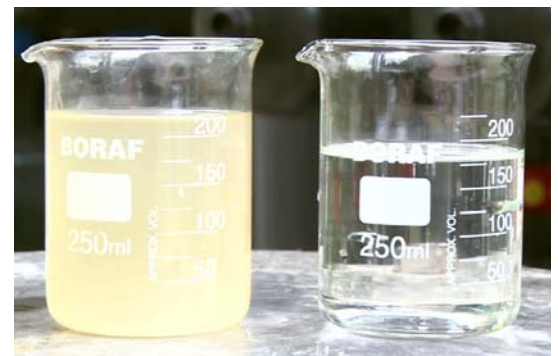


iX Masters™ SF Series

FEATURES

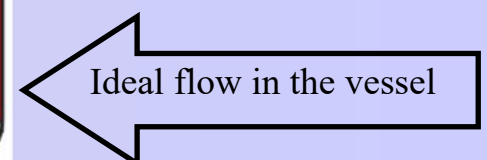
- ◆ Can handle higher inlet turbidity (100 NTU), (but recommended for feed water turbidity ≤ 50 NTU)
- ◆ Can accept higher inlet flows (velocity, from 25 to 50 m/hr)
- ◆ Can achieve fine particles cut-off (sub-microns particles cut-off)
- ◆ Can maintain SDI ≤ 3 or 5 for RO feed water.
- ◆ Can perform TOC polishing (Along with iX-Masters OS) in waste water recycle



How iX-Masters™ SF Works?

'Super filter' uses advanced internals to achieve equal distribution & applied pressure across the entire cross sectional area of filter. Also, the underdrain collectors help in maintaining uniform flows in the micro media. The '**fractal underdrain collection**' area is much higher than conventional collectors, ensuring ideal conditions for perfect filtration. Unlike conventional media filters, **iX-Masters™ SF** doesn't break, even at higher differential pressures. That is, it doesn't allow micro channeling to take place, thereby restricting larger particles to pass through! iX-Masters™ SF, simply achieves particles filtration close to theoretical

values. Micro-media in the filter, works to retain smallest particles in the bed-depth.



iX Masters™ SF Series—Range

iX – Masters™ SF available from flow capacity from 4.0 m³/hr to 360 m³/hr. It can be available in vertical pressure-vessels & horizontal pressure vessels models.

Features Specifications:

DESCRIPTION	Small Range	Medium Range	Large Range	Ex-Large Range
Flow (m ³ /hr)	4 to 20	25 to 75	80 to 175	180 to 360
Pressure Vessel	MSEP / MSRL	MSEP / MSRL	MSEP / MSRL	MSEP / MSRL
Pr. Vessel Code	IS / ASME	IS / ASME	IS / ASME	IS / ASME
Internals (Proprietary)	iX-Masters™	iX-Masters™	iX-Masters™	iX-Masters™
Frontal Piping	CPVC /UPVC / MS /SS	MSEP / MSRL / SS	MSEP / MSRL / SS	MSEP / MSRL / SS
Operational Mode	Auto*	Auto*	Auto*	Auto*
Valves	Ball Valves / Butterfly Valves	Butterfly Valves	Butterfly Valves	Butterfly Valves
Valves – Automation	Solenoid / Pneumatic	Electrical / Pneumatic	Electrical / Pneumatic	Electrical / Pneumatic
Backwash Pump	Separate	Separate	Separate	Separate
Air Scoring	N/A	Optional	Optional	Optional
Instrumentation				
Diff. Pr. Controller	Yes	Yes	Yes	Yes
Pr. Gauges Locations	Inlet / Outlet	Inlet / Outlet	Inlet / Outlet	Inlet / Outlet

**Auto mode available by default. Manual plant mode available on request.*




iX Masters™ SF: Applications

- Municipal Potable Water Filtration
- STP—Tertiary Treatment
- RO / DM Pre-treatment
- Effluent Recycle: Pre-treatment (TOC Reduction)
- Industrial Process Water Filtration
- Cooling Towers: Makeup & Recirculation – Water Filtration
- River water filtration: Agricultural use
- Fisheries: Water filtration

iX Masters™ SF Series — Advantages

- ◆ Proprietary technology (Patents pending) can stand for the life of the filters
- ◆ Very high quality of filtration (sub-microns particles cut-off)
- ◆ Less waste water volume than conventional filters (Can be recycled back)
- ◆ Lesser footprint & easy installation (High feed velocity)
- ◆ Minimum maintenance
- ◆ Minimized chemicals consumption (or completely eliminated in certain cases)
- ◆ Improved life of RO Membranes & Ion-Exchange resins due to enhanced pre-filtration
- ◆ User friendly PLC control system & easy integration

Retrofit & Revamping Options

A top-down view of a circular filter assembly. The assembly consists of a central circular plate with numerous vertical filter cartridges arranged in a grid pattern. Each cartridge is a white cylinder with a black top cap. The entire assembly is mounted on a light-colored surface.

iX – Masters™ SF can replace conventional, 'Pressure Sand Filters' (PSF), Multimedia Filters (MMF) etc in any integrated water treatment schemes.

Conventional filters can be retrofitted to 'iX-Masters SF' for higher performance (conditions apply)

12/05/2022 13:57